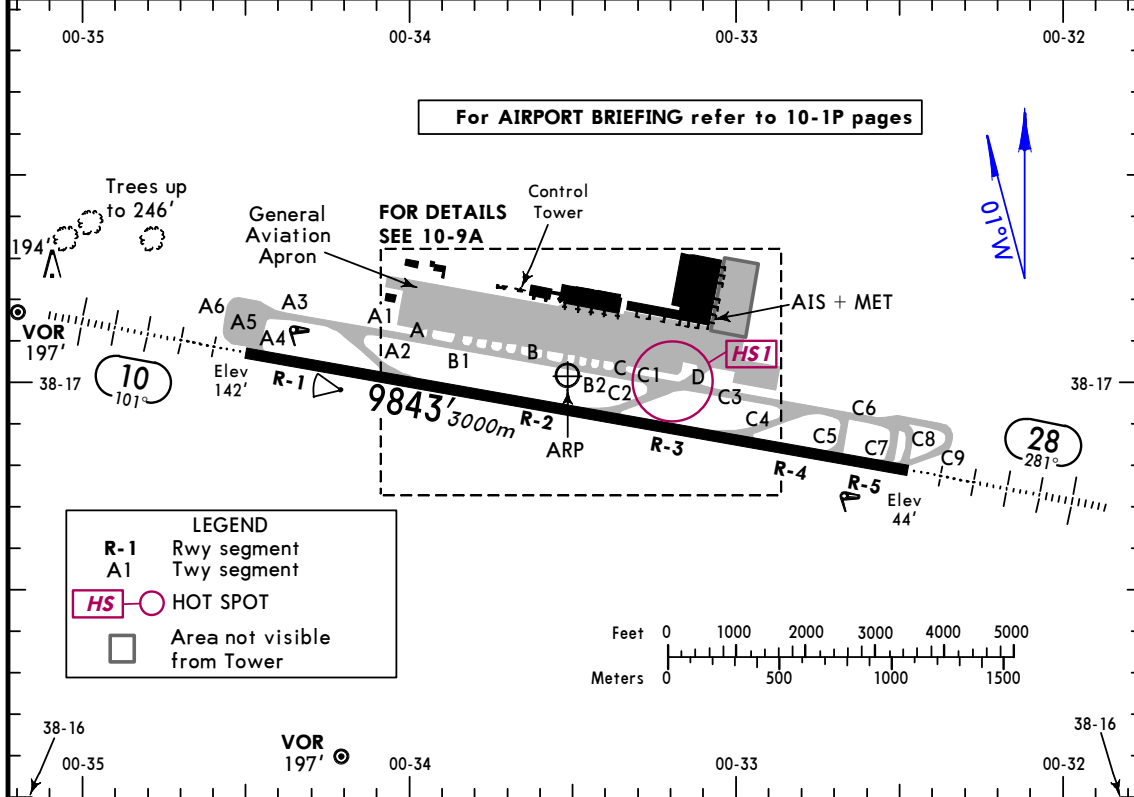


ATIS 120.07	ACARS: D-ATIS	ALICANTE Clearance 119.85	ALICANTE Tower (GND) 130.65	Tower 118.15
----------------	------------------	------------------------------	--------------------------------	-----------------



ADDITIONAL RUNWAY INFORMATION

RWY		USABLE LENGTHS		TAKE-OFF	WIDTH
		Threshold	Landing Beyond Glide Slope		
10	HIRL (50m) CL (15m) HIALS REIL PAPI (3.0°) ① RVR		8694' 2650m	③	148' 45m
28	HIRL (50m) CL (15m) HIALS REIL PAPI (3.0°) ②				

- ① HSTIL-C2&C4
- ② HSTIL-A2
- ③ TAKE-OFF RUN AVAILABLE

<u>RWY 10:</u>		<u>RWY 28:</u>	
From rwy head	9843' (3000m)	From rwy head	9843' (3000m)
twy A4 int	9744' (2970m)	twy C7 int	9616' (2931m)
		twy C5 int	8858' (2700m)

HOT SPOT

(For information only, not to be construed as ATC instructions.)

HS1 Use CAUTION at instructions to turn into Rwy direction: No entry to Twy C2. Area of confusion. Special attention to markings and ATC instructions.

Standard

TAKE-OFF ①

	LVP must be in force				RCLM (DAY only) or RL	RCLM (DAY only) or RL	NIL (DAY only)
	Approved Operators HIRL, CL & mult. RVR req	RL, CL & mult. RVR req	RL & CL	RCLM (DAY only) or RL			
C	125m	150m	200m	250m	400m	500m	
D	150m	200m	250m	300m			

① Operators applying U.S. Ops Specs: CL required below 300m.