

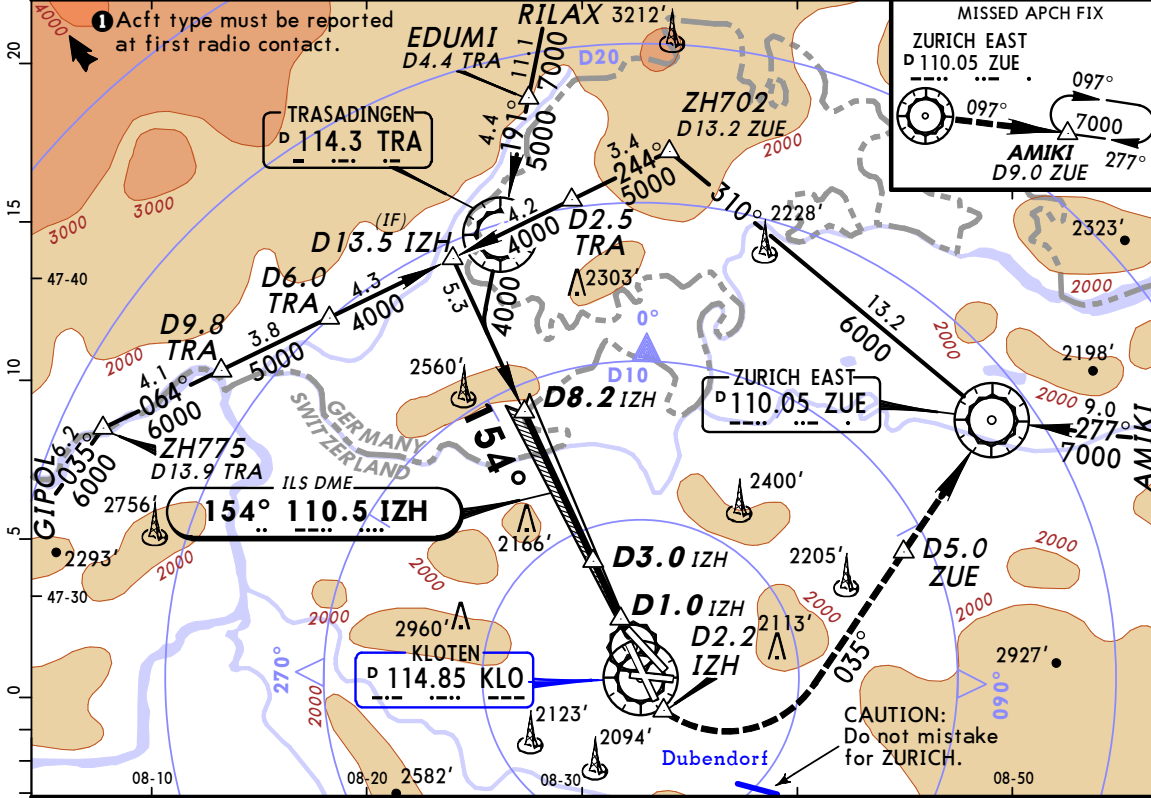
LSZH/ZRH
ZURICH



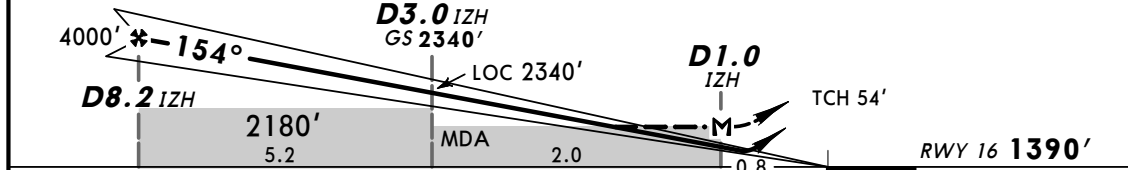
JEPPESSEN
27 NOV 09 (11-2)

ZURICH, SWITZERLAND
ILS Rwy 16

ATIS 128.52		ZURICH Arrival (APP/R) ① 118.0 120.75 119.7			ZURICH Tower 118.1 119.7		Ground 121.9
LOC IZH 110.5	Final Apch Crs 154°	GS D3.0 IZH 2340' (950')	CAT IIIA ILS DH 50'	CAT I & II ILS Refer to Minimums	Apt Elev 1416' RWY 1390'		
MISSED APCH: Climb STRAIGHT AHEAD. Initial climb to 5000'. At D2.2 IZH past the station turn LEFT (MAX 210 KT/MIM BANK 20°) to intercept R-215 inbound ZUE VOR. At D5.0 ZUE to the station continue climb to 7000'. Cross ZUE VOR at 6000' or above and intercept R-097 ZUE to AMIKI.							
Alt Set: hPa Rwy Elev: 50 hPa Trans level: By ATC Trans alt: 7000' 1. ILS front course width 3.1°. 2. LOC coverage area reduced to 5° L/R of centerline. 3. Due to disturbance of GS signal of rwy 16 pilots might be requested by ZURICH Arrival to change apch type from ILS apch to LOC or visual apch, met cond permitting.							② 5900' within 17 NM



LOC	IZH DME	8.0	7.0	6.0	5.0	4.0	3.0	2.0
(GS out)	ALTITUDE	3940'	3620'	3300'	2980'	2660'	2340'	2020'



Gnd speed-Kts	120	140	160	180	HIALS-II REIL PAPI 	D2.2 IZH ↑
ILS GS 3.00° or	647	755	862	970		
LOC Descent Gradient 5.3%						

JAR-OPS STRAIGHT-IN LANDING RWY 16							
CAT IIIA I 5.0% ① DH 50' RA 93' DA(H) 1490' (100')		CAT II 5.0% ① Missed apch climb gradient mim RA 187' DA(H) 1590' (200')		CAT I 2.5% C:1825' (435') D:1835' (445') DA(H) FULL ALS out		LOC (GS out) MDA(H) 1840' (450') ALS out	
C	RVR 200m	RVR 300m ②	RVR 550m	RVR 1000m	RVR 1700m	2600m	RVR 1700m 2600m
D							

① Climb gradient up to 2400'.
② Operators applying U.S. Ops Specs: Autoland or HGS required below RVR 350m.